

Vulcan Effects

Private Applications



After the installation you will see some or all of the typical effects. Depending on the water compositions one effect may be stronger than the other. Please observe.

Immediately ...

Hand washing

Wash your hands: you can feel and see an immediate difference in the way that soap and shampoo foams.

In the shower

Shampoo and soap lathers more. Typical findings are that the hair feels softer. Try it out.

Taste of water & tea

The taste of the water alters somewhat. Have a glass and see how you like the taste.

After a few days ...

In the kitchen and bathroom

Scale deposits form quickly in the sink or basins, on glass shower walls or on the tiles. With the Vulcan treatment there are no longer hard circle-shaped stains forming. You will see that calcium and magnesium is now dust-like and easy to wipe away. Without the Vulcan treatment, the stains have to be removed by scrubbing and with cleaning agents. Typical areas are: Kitchen sink, bathroom basin, glass shower walls, tiles, fittings etc.

Water heaters/boilers

The scale deposits on the inside of heaters/boilers will be less and easier to clean. The heating element will show reduced incrustations. Cleaning may be needed 2-3 times less than without treatment.

After 2-4 weeks ...

Shower heads/ aerators

In hard water, shower heads and aerators clog up fast. Cleaning them typically demands to soak the parts in acid or special cleaning liquids. Those parts will stay clean much longer - typical findings show 2-3 times longer. What is more, cleaning nozzles and parts can often be done by lightly scrubbing over the surface.

Washing machines and dishwashers

The dishwasher often needs less detergents and the tableware shows less/ no streaks. Washing machines need much less washing powder. Discontinue the use of softening additives. Check how soft the garments and towels are without it.

Long time effects in the piping system

The piping system will get cleaned. As this is a long-term effect, the differences in the deposits are difficult to measure. Very often within the first 2-4 weeks you will find this effect: The latest layer of incrustation in the pipe is quite "loose". That often comes off in tiny crumbles which you may find in the aerator. Once the first thin layer is removed, the layers beneath them are stone hard and only fine powder layers will be removed - not recognizable any more. Mini-crumbles in the aerator within the first 2-4 weeks are proof of the cleaning effect.

With the following points, you can test the efficiency of Vulcan:



Piping System

Vulcan protects the whole piping system and reduces already existing deposits. Scale is now washed away in the water as a fine powder.



Shampoo and Soap

Due to the changed surface structure of the water, shampoo and soap foam more and are more yielding.



Skin and Personal Hygiene

After taking a shower, pay attention to your (softer) skin and hair (especially allergic people). Under the circumstances you need less expensive care products.



Tiles and Fittings

The common water(scale) splashes you can easily remove with your daily cleaning with a damp cloth or sponge effortless.



Washing Machines

Reduce the liquid or powder laundry detergent as you would with soft water (least amount). Fabric softeners, decalcifiers or tablets are not required.



Food and Beverages

Keeps their natural taste and important minerals remain in the water.



Nozzles and Shower Heads

No need to acid-clean or replace them. They now will stay free of scale longer.



After the installation you will see some or all of the typical effects. Depending on the water compositions one effect may be stronger than the other. Please observe.

Agriculture Applications

- the surface tension of the water will be lower
- plants can easier absorb
- The maintenance of water-related equipment will be required at much longer intervals
- sprinklers stay clean longer



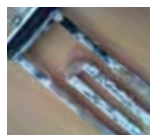
Farming Applications

- Bacteria and biofilm will be reduced and will not be able to affect plants and livestock
- No need of salt or aggressive chemicals
- Better growth rates and less illness
- Improved effectiveness of refrigeration equipment
- Incubators stay clean and the humidification system operates effectively, which raises animal health
- spray nozzles, nipple and bell drinkers stay clean of blockages



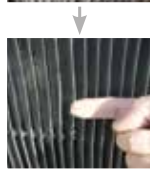
Condominiums and Large Buildings

- Machinery and equipment perform more reliably: cooling towers, heating systems, ...
- Less time and effort on maintenance in building and facilities
- Faster cleaning of kitchens and bathrooms
- Filters, shower heads and basins stay cleaner
- Considerable savings on cleaning agents
- Cleaner sprinkler nozzles for garden irrigation



Cooling Towers

- Removal of existing scale deposits
- Maximized tower cycles
- Water consumption and wastage will be reduced
- Dramatically reduction of chemical usage
- Bacteria and biofilm will be reduced
- Maintenance, repairs and replacements will be reduced



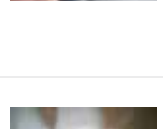
Hospitality Applications

- Longer life and improved performance of appliances
- Reduction in cleaning time and labour costs
- Reduction in heating costs
- Fewer maintenance visits required on water heaters, washing machines, etc.
- Savings on soap and cleaning agents
- Softer towels and bed linnen



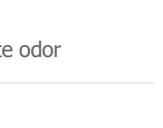
Industries

- Maximized life of production equipment
- Lengthens maintenance intervals
- Increase in overall productivity
- Removal of existing scale deposits in cooling towers
- More efficient use of energy consumption
- Reduction of chemical and salt costs
- An easier and less-frequent cleaning process
- Less repairs of pumps and valves



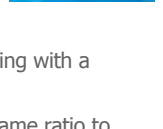
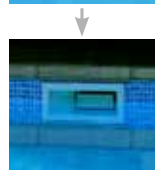
Hospitals and Medical Buildings

- Maximizes the life of water based appliances and equipment
- Less detergents and soaps will be needed
- Reduces chemical and salt costs
- Patients with eczema will notice an improvement in the texture of their skin
- Provides a more sanitary environment for patients and staff
- Reduces cleaning and maintenance costs
- Chlorine and ammonia will have a more moderate odor



Swimming Pools & Spas

- Vulcan reduces the cleaning effort for the pool itself, the water line, for tiles, grids, floors and walls.
- Heat exchangers operate more efficiently
- Reduction of biofilm
- Longer life and improved performance of filters and pumps
- Reduction of cleaning agents and chemicals by up to 50%
- Chlorine can often be reduced by up to 10- 25%
- Active oxygen can cut back step by step by starting with a reduction of 10 percent
- The use of pH-adjustors can be reduced in the same ratio to which the disinfectant product has been reduced



Solar Water Heating

- Cleaner heat exchangers and distributor pipes
- Reduces scale build-up in collectors
- Protects hot water tanks and vacuum tubes
- Protects the system from over-heating
- No need to circulate acids
- pH levels remain unchanged, preventing corrosion
- Reduces malfunctioning of valves in primary circuits
- Fewer maintenance visits required for your equipment

